



# S. S. ENGINEERING

Manufacturers & Exporters of Chemical Plants & Machinery



## PLODDERS

- Single Worm Single Plodder
- Single Worm Double Plodder
- Twin Worm Double Plodder

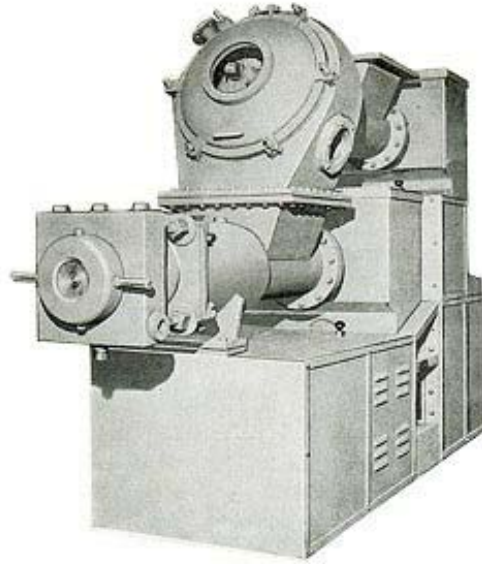
The plodder is commonly used by Soap manufacturing units is a very important equipment which is specially designed with heavy duty gear train, breakearms and load thrust carrier. It plods the mass of material and extrudes the soap or detergent particular shape or design of the soap bar Die is provided on the plodder.

## SINGLE WORM SINGLE PLODDER



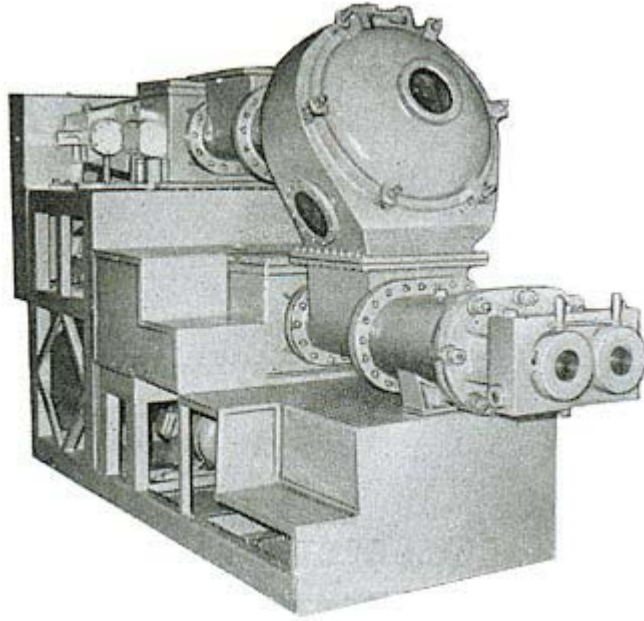
The plodder is commonly used by Soap manufacturing units is a very important equipment which is specially designed with heavy duty gear train, breake arms and load thrust carrier. It plods the mass of material and extrudes the soap or detergent particular shape or design of the soap bar Die is provided on the plodder.

## SINGLE WORM DOUBLE PLODDER



The plodder is commonly used by Soap manufacturing units is a very important equipment which is specially designed with heavy duty gear train, breake arms and load thrust carrier. It plods the mass of material and extrudes the soap or detergent particular shape or design of the soap bar Die is provided on the plodder.

## TWIN WORM DOUBLE PLODDER



The plodder is commonly used by Soap manufacturing units is a very important equipment which is specially designed with heavy duty gear train, break arms and load thrust carrier. It plods the mass of material and extrudes the soap or detergent particular shape or design of the soap bar Die is provided on the plodder.

## **S. S. ENGINEERING**

---

C1-B, Hatkesh Udyog Nagar, Kashi Mira Bhayander Road, Mumbai 401104, India.  
Tel. : +91 22-812 5478 / 811 1541 / 813 1648  
Fax : +91 22-8125478  
E-mail: [ssengine@bom7.vsnl.net.in](mailto:ssengine@bom7.vsnl.net.in)